
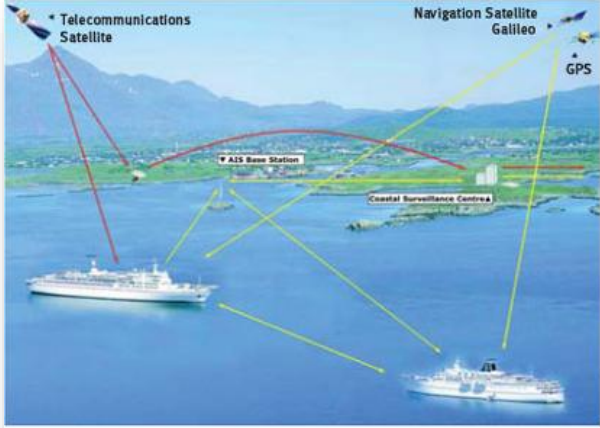


PENALTY SCHEME

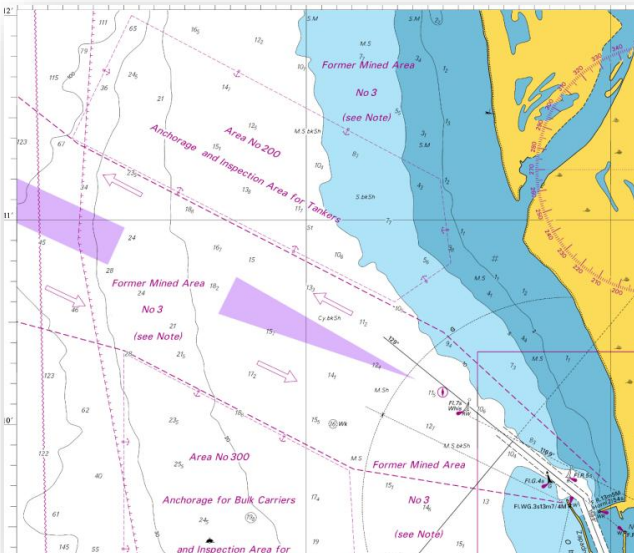
	<p>LAST PORT SUKHUMI PENALTY = 400 GEL FIRST TIME 250 USD SECOND = PRIZON + ? PENELATY</p>
	<p>VESSEL 72 HRS PRE-ARRIVAL INFORMATION DELAY PENALTY =100 GEL (60 USD)</p>



GEOREP INFORMATION DELAY =
PENALTY = MASTER SALLARY X 2

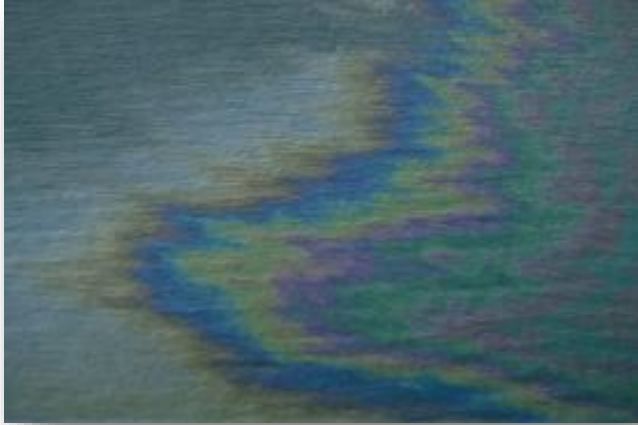


LOWERING LIFE BOAT
PENALTY = 50 000 GEL (30300 USD)



Traffic Separation Zone violation
 under assistance of VTS control
 (10m port side / 10m starboard
 side)!

PENALTY = 50 000 GEL(30300 USD)



Sea pollution by oil or sewage

PENALTY

0.1ltrs = 65 000 GEL (39 400 USD)

1 ltr = 65 000 Gel (39 400 USD)

1mt. = 65 000 GEL (39 400 USD)

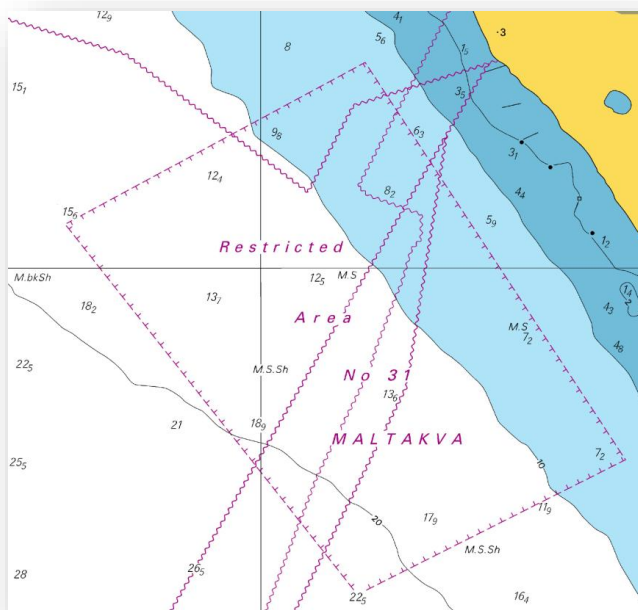


Garbage pollution

0.1ltrs = 65 000 GEL (39 400 USD)

1 ltr = 65 000 Gel (39 400 USD)

1mt. = 65 000 GEL (39 400 USD)



Restricted Area N.31 – Maltakva

Restricted Area – Sarpi – Gnio

PENALTY=200 000 GEL (121200 USD)